

On the Safe Side with Bosch Fuel Filters

Beware of Inferior Filters!

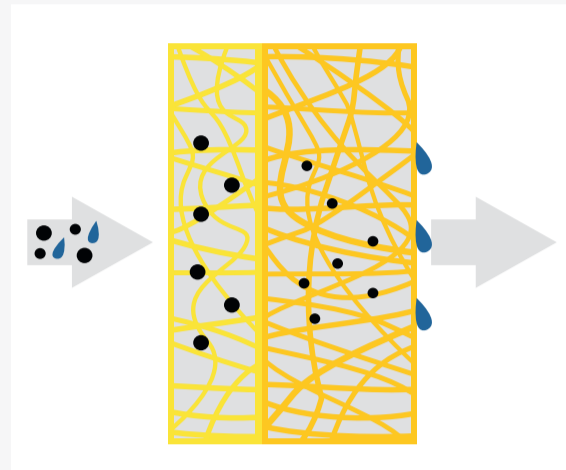


BOSCH

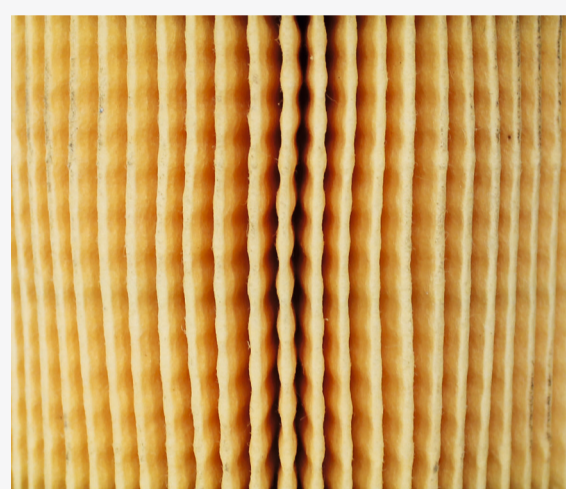
Invented for life

High-Quality Fuel Filter Filter Medium

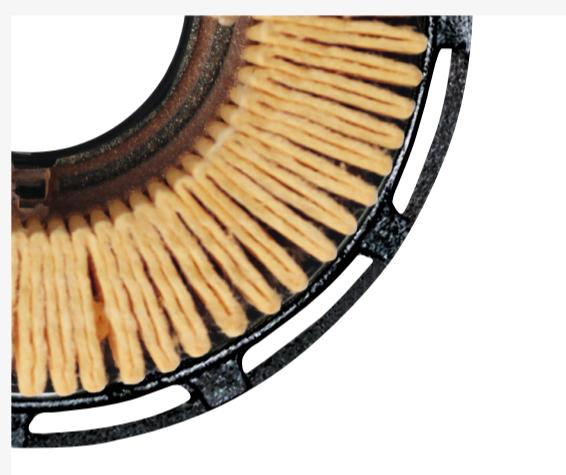
High particle-separation rate thanks to micro-porous multi-layer filter medium



Large dirt-holding capacity through high number of pleats

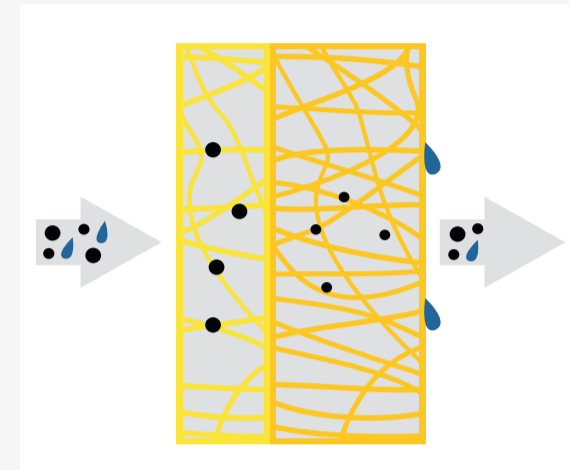


Reliable filtration thanks to stable pleat geometry



Low-Quality Fuel Filter Filter Medium

Low-quality filter medium



Small number of pleats



Unstable pleat geometry



Possible Expensive Consequences

- ▶ Increased wear of the engine
- ▶ Injector clogging
- ▶ Corrosion damage on injection system, engine and pump

- ▶ Increased wear of the engine caused by particles
- ▶ Reduced service life

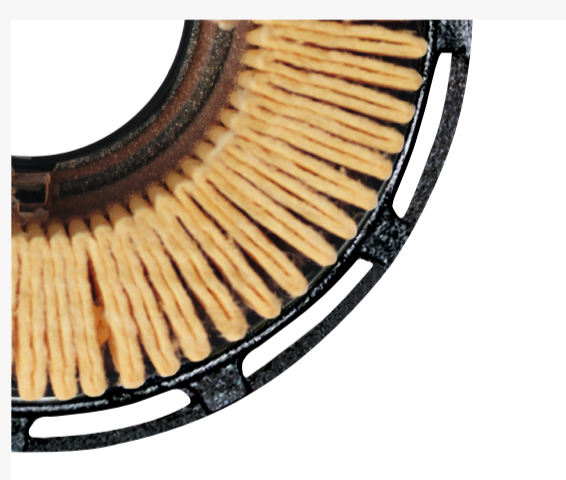
- ▶ Insufficient fuel filtration
- ▶ Increased wear of the engine

High-Quality Fuel Filter Tightness

Corrosion-resistant housing prevents fuel leakage



Stable connection of the end pleats

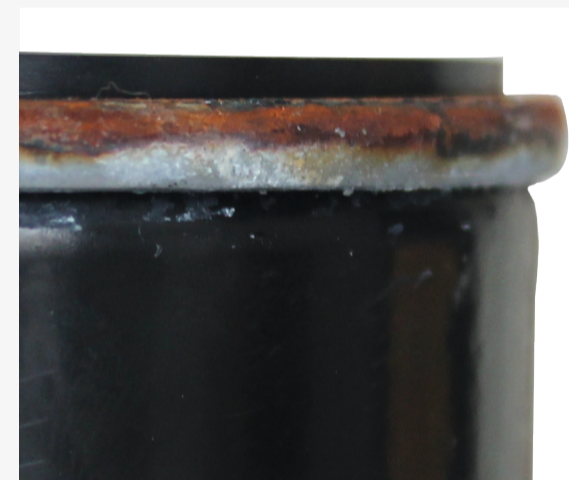


High-quality sealing made out of a special rubber prevents any fuel leakage

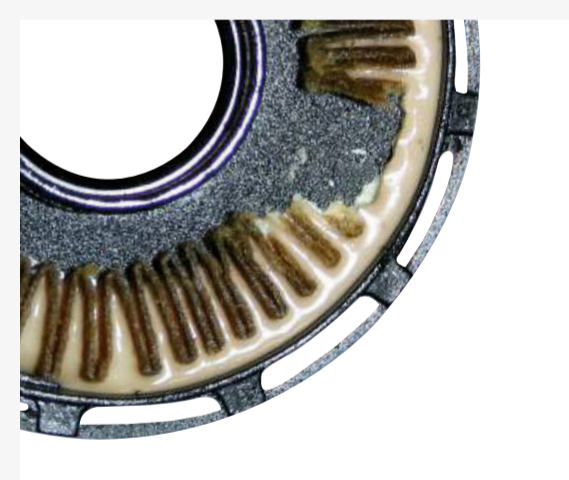


Low-Quality Fuel Filter Tightness

Corrosion caused by spray water



Bypass of unfiltered fuel caused by the missing connection of the end pleats



Damaged, porous sealing



Possible Expensive Consequences

- ▶ Hazards caused by leaking fuel
- ▶ Environmental pollution caused by leaking fuel

- ▶ Increased wear of the engine

- ▶ Hazards caused by leaking fuel
- ▶ Environmental pollution caused by leaking fuel

High-Quality Fuel Filter Cleanliness

Protection cap on the clean side (outlet) of the filter to prevent any soiling during transport and storage



Low-Quality Fuel Filter Cleanliness

Missing protection cap facilitates filter soiling



- ▶ Increased wear of the engine caused by dirt particles
- ▶ Reduced service life of the filter